



BRITISH SOCIETY OF
GASTROENTEROLOGY

Success Stories

POPSTER and AWARE-IBD



Alan Lobo, Sheffield



IBD Investigators Day

Monday 29th January 2024






bsg BRITISH SOCIETY OF
GASTROENTEROLOGY

Sandy Park, Exeter



PoPSTER and AWARE-IBD



<h2>PoPSTER</h2> 	<h2>AWARE-IBD</h2> 
 <p>NIHR National Institute for Health and Care Research</p> <p>Commissioned Call</p>	  <p>The Health Foundation</p> <p>Common Ambition Programme CCUK Lead organisation</p>
<p>Patient and clinician preferences for adults with steroid-resistant ulcerative colitis</p>	<p>AWARE-IBD = Putting People with inflammatory bowel disease (IBD) in control of their care</p>
<p>Mixed methods</p>	<p>Mixed methods research nested in Quality Improvement programme</p>

Where do these studies sit?

Basic Science



Applied research

Clinical trials
Cohort/ Real world



eg Health economic analysis,
Qualitative research,
Stated preference studies



POPSTER

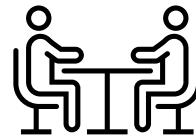
Patient and clinician preferences for adults with steroid-resistant ulcerative colitis

Health Care Professional Survey



scenarios

Qualitative interviews



Health Care Professionals

People with IBD

Discrete choice Experiments



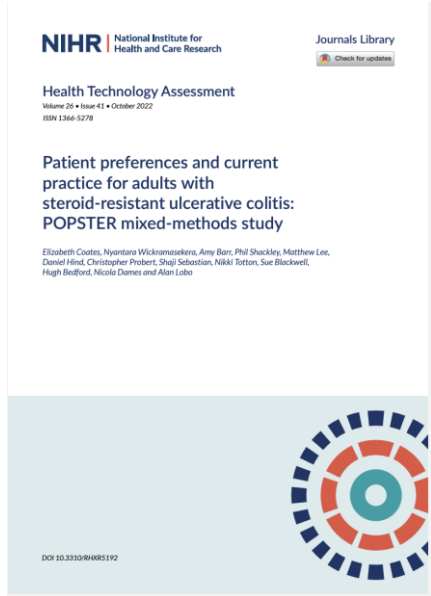
Health Care Professionals

People with IBD

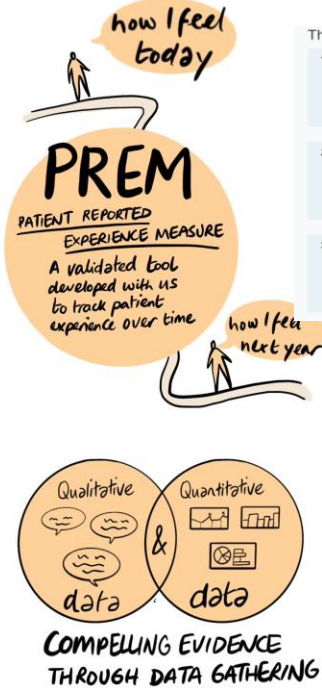
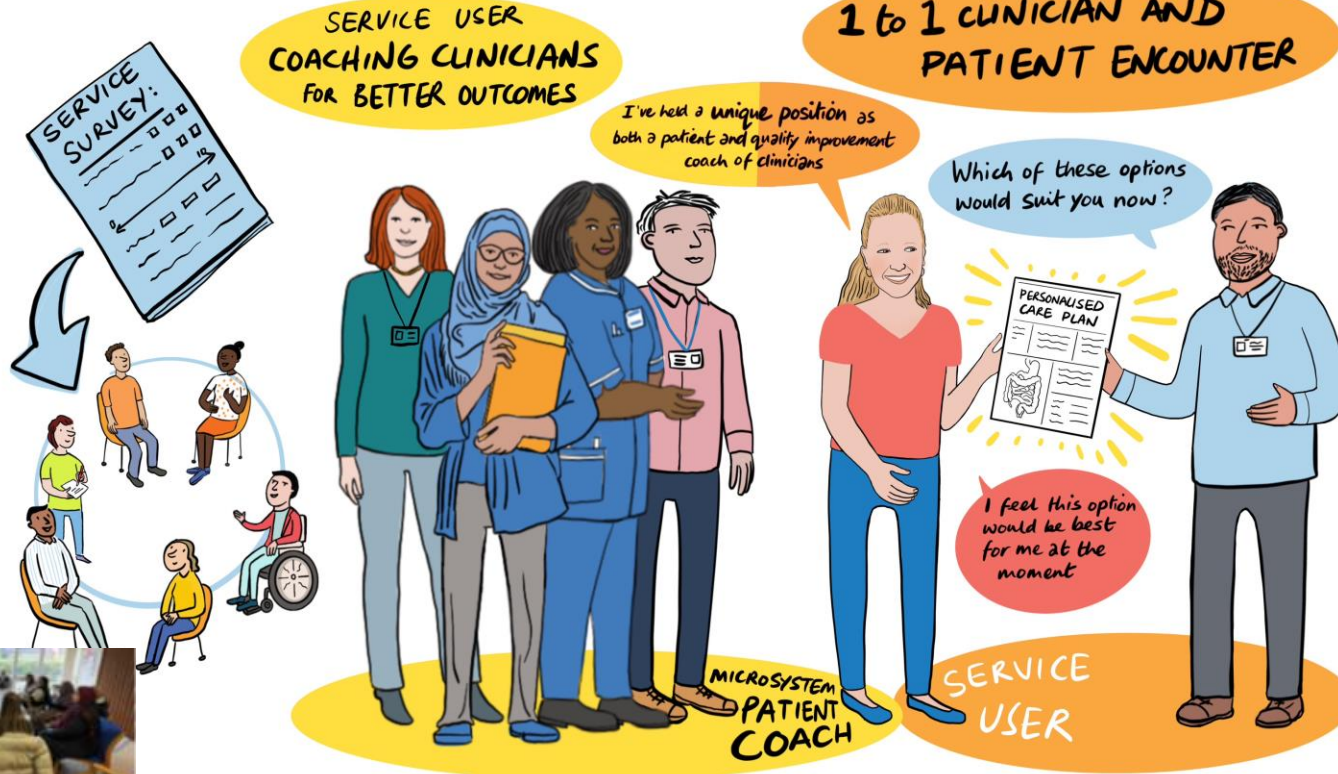
Multistakeholder workshop



- differing definitions
- steroid resistance vs dependent
- anti TNF use less in thiopurine naïve
- range of individual considerations in choice of agent
- clinician preferences relate to long term remission
- patient preferences related more to toxicity
- services could be organised to respond



What Matters to You?



The Care Team

- I know who the different people are in the Care Team looking after me

1. Not at all	2. To a little extent	3. To some extent	4. To a large extent	5. To a very large extent
---------------	-----------------------	-------------------	----------------------	---------------------------
- I know how to contact the Care Team between appointments if I need to

1. Not at all	2. To a little extent	3. To some extent	4. To a large extent	5. To a very large extent
---------------	-----------------------	-------------------	----------------------	---------------------------
- I can get a response from the Care Team by the end of the next working day when experiencing a flare

1. Not at all	2. To a little extent	3. To some extent	4. To a large extent	5. To a very large extent
---------------	-----------------------	-------------------	----------------------	---------------------------

Qualitative interviews



PERSONALISATION ACCESS COMMUNICATION



VoiceAbility
AWARE IBD

Take control of your care.

A toolkit for people with IBD, to help you communicate confidently with those involved in your care

Think about what questions you need to ask and put them in order, with the most important at the top of your list. If you have a professional care plan, you could put the list in there.

Key themes and messages:

- Patient involvement and leadership
- Project management
- Methodology
- Dissemination and spread, Impacts and outputs
- Partnerships



Project Management

Managing the partnership

- Leadership group meetings alternate weeks
- Patient oversight committee

Project manager



Data will be monitored by the Business Analyst, Project Manager and PIG on a fortnightly basis

RISK REGISTER	AWARE-IBD				
1. Study Title	AWARE-IBD				
2. Type of study	Mixed methods, quasi-experimental				
3. Study Manager	Rene Brinkley				
4. CTU/ main lead	Daniel Ford				
5. CTU/ main lead	Alex Lobo				
6. CTU/ main lead					

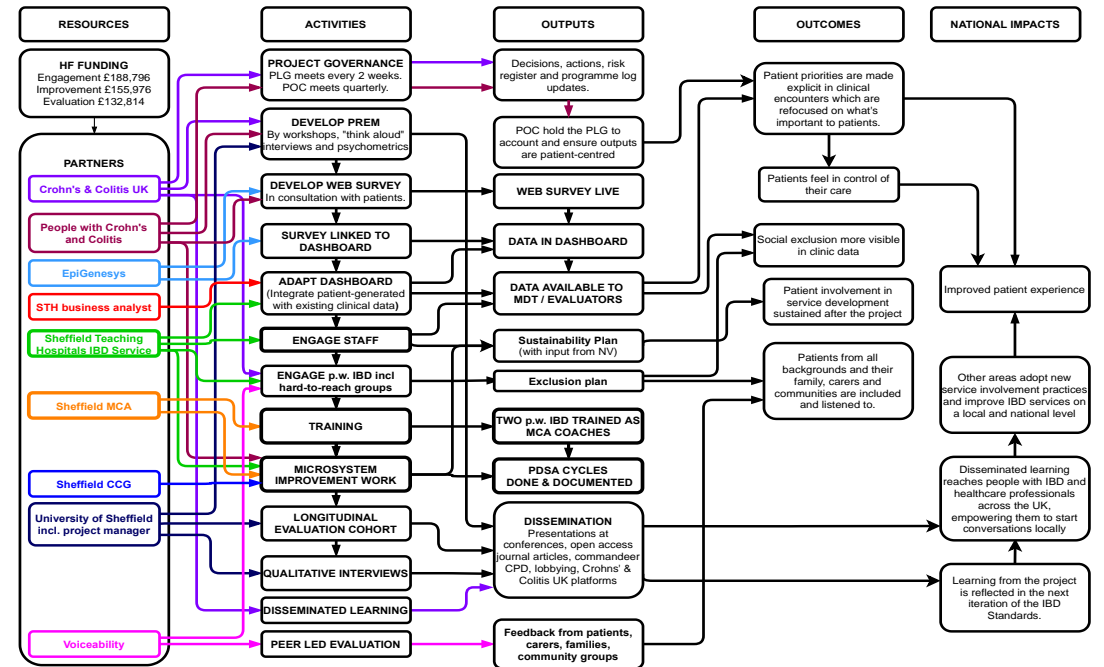
Risk Area (add new and additional in this column)	Issue/Risk description	Likelihood	Impact/Consequences	Grade of risk	Minimis
10. IMPROVEMENTS	Staff in post at sites	Most of the required staff are already in post	2 - Unlikely	4 - Major	High
	Programme Plan	AWARE-IBD	Planned		
	Updated	08/03/21	Ongoing		
	By whom	Professor Alex Lobo	Completed		
			Potential slippage		
			Overdue		

Task ID	Project Strand	Milestone	15-Nov-20	22-Nov-20	29-Nov-20	6-Dec-20	13-Dec-20	20-Dec-20	27-Dec-20	3-Jan-21	10-Jan-21	17-Jan-21	24-Jan-21	31-Jan-21
31		Minimum cumulative participant recruitment												
32	Recruitment and baseline data collection	Qualitative research w/ patients and professionals												
33		Follow-up after initiation												
34		Close out, analysis, write-up												
41		Initial participant approach and recruitment												
42	Engagement	VoiceAbility upskilling co-designed toolkit												
43		VoiceAbility - content Co-design												

Budget

- liaison between organisations
- staffing
- reporting to funder
- no-cost extension

Logic Model



Workshops

- Sustainability, Project running, Dissemination



Methodology



- Survey
- Qualitative interviews
- Discrete Choice Experiments
- Quality Improvement

Help to understand values

- Microsystem
 - Co-production
-



Methodology – be curious!



- Survey
- Qualitative interviews
- Discrete Choice Experiments
- Quality Improvement

Help to understand values

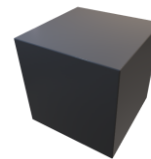
- Microsystem
- Co-production
- Lean

Knowledge transfer

Complexity science

Implementation science

Improvement science



Large data sets

AI

Dissemination: Impact and Outputs



Health Technology Assessment

Volume 26 • Issue 41 • October 2022

Elizabeth Coates, Nyantara Wickramasekera, Amy Barr, Phil Shackley, Matthew Lee, Daniel Hind, Christopher Probert, Shaji Sebastian, Nikki Totton, Sue Blackwell, Hugh Bedford, Nicola Dames and Alan Lobo

Patient preferences for treatment in steroid resistant ulcerative colitis – a discrete-choice experiment

Nyantara Wickramasekera, Elizabeth Coates, Amy Barr, Matthew J. Lee, Sue Blackwell, Hugh Bedford, Nicola Dames, Shaji Sebastian, Christopher Probert, Phil Shackley & Alan J. Lobo

Scand J Gastro 2022

ORIGINAL ARTICLE

WILEY

Development of an inflammatory bowel disease (IBD) Patient-Reported Experience Measure (PREM): A patient-led consensus work and 'think aloud' study for a quality improvement programme

Sheldon 2022

Dissemination: Impact and Outputs



Health Technology Assessment

Volume 26 • Issue 41 • October 2022

Elizabeth Coates, Nyantara Wickramasekera, Amy Barr, Phil Shackley, Matthew Lee, Daniel Hind, Christopher Probert, Shaji Sebastian, Nikki Totton, Sue Blackwell, Hugh Bedford, Nicola Dames and Alan Lobo

Patient preferences for treatment in steroid resistant ulcerative colitis – a discrete-choice experiment

Nyantara Wickramasekera, Elizabeth Coates, Amy Barr, Matthew J. Lee, Sue Blackwell, Hugh Bedford, Nicola Dames, Shaji Sebastian, Christopher Probert, Phil Shackley & Alan J. Lobo

Scand J Gastro 2022



ORIGINAL ARTICLE

WILEY

Development of an inflammatory bowel disease (IBD) Patient-Reported Experience Measure (PREM): A patient-led consensus work and 'think aloud' study for a quality improvement programme

Sheldon 2022

New studies

NIHR | National Institute for
Health and Care Research

23/158 Treatment of steroid-resistant ulcerative colitis with tofacitinib compared with infliximab



Dissemination: Impact and Outputs



Health Technology Assessment

Volume 26 • Issue 41 • October 2022

Elizabeth Coates, Nyantara Wickramasekera, Amy Barr, Phil Shackley, Matthew Lee, Daniel Hind, Christopher Probert, Shaji Sebastian, Nikki Totton, Sue Blackwell, Hugh Bedford, Nicola Dames and Alan Lobo

Patient preferences for treatment in steroid resistant ulcerative colitis – a discrete-choice experiment

Nyantara Wickramasekera, Elizabeth Coates, Amy Barr, Matthew J. Lee, Sue Blackwell, Hugh Bedford, Nicola Dames, Shaji Sebastian, Christopher Probert, Phil Shackley & Alan J. Lobo

Scand J Gastro 2022



ORIGINAL ARTICLE

WILEY

Development of an inflammatory bowel disease (IBD) Patient-Reported Experience Measure (PREM): A patient-led consensus work and 'think aloud' study for a quality improvement programme

Sheldon 2022

QI Dissemination

Eg Rogers Everard, Moore 'Crossing the chasm', 1991

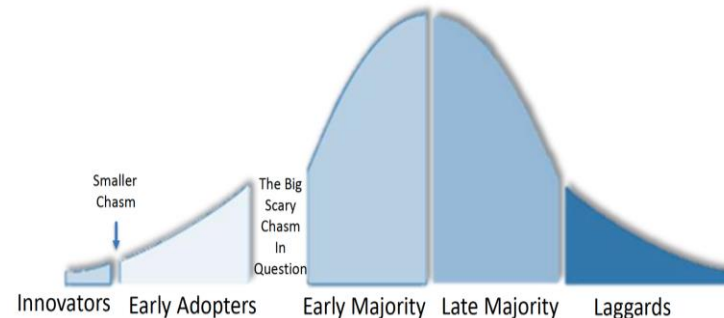
What is your intervention?

Who are might collaborate in adoption and spread?

New studies

NIHR | National Institute for
Health and Care Research

23/158 Treatment of steroid-resistant ulcerative colitis with tofacitinib compared with infliximab



Dissemination: Impact and Outputs



Health Technology Assessment

Volume 26 • Issue 41 • October 2022

Elizabeth Coates, Nyantara Wickramasekera, Amy Barr, Phil Shackley, Matthew Lee, Daniel Hind, Christopher Probert, Shaji Sebastian, Nikki Totton, Sue Blackwell, Hugh Bedford, Nicola Dames and Alan Lobo

Patient preferences for treatment in steroid resistant ulcerative colitis – a discrete-choice experiment

Nyantara Wickramasekera, Elizabeth Coates, Amy Barr, Matthew J. Lee, Sue Blackwell, Hugh Bedford, Nicola Dames, Shaji Sebastian, Christopher Probert, Phil Shackley & Alan J. Lobo

Scand J Gastro 2022

New studies

23/158 Treatment of steroid-resistant ulcerative colitis with tofacitinib compared with infliximab



ORIGINAL ARTICLE

WILEY

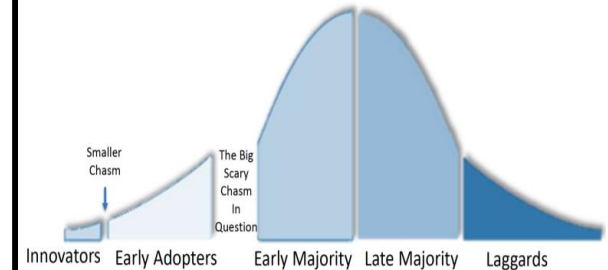
Development of an inflammatory bowel disease (IBD) Patient-Reported Experience Measure (PREM): A patient-led consensus work and 'think aloud' study for a quality improvement programme

Sheldon 2022

QI Dissemination

Eg Rogers Everard, Moore 'Crossing the chasm', 1991

What is your intervention?
Who are might collaborate in adoption and spread?



Development of researchers



Partnership

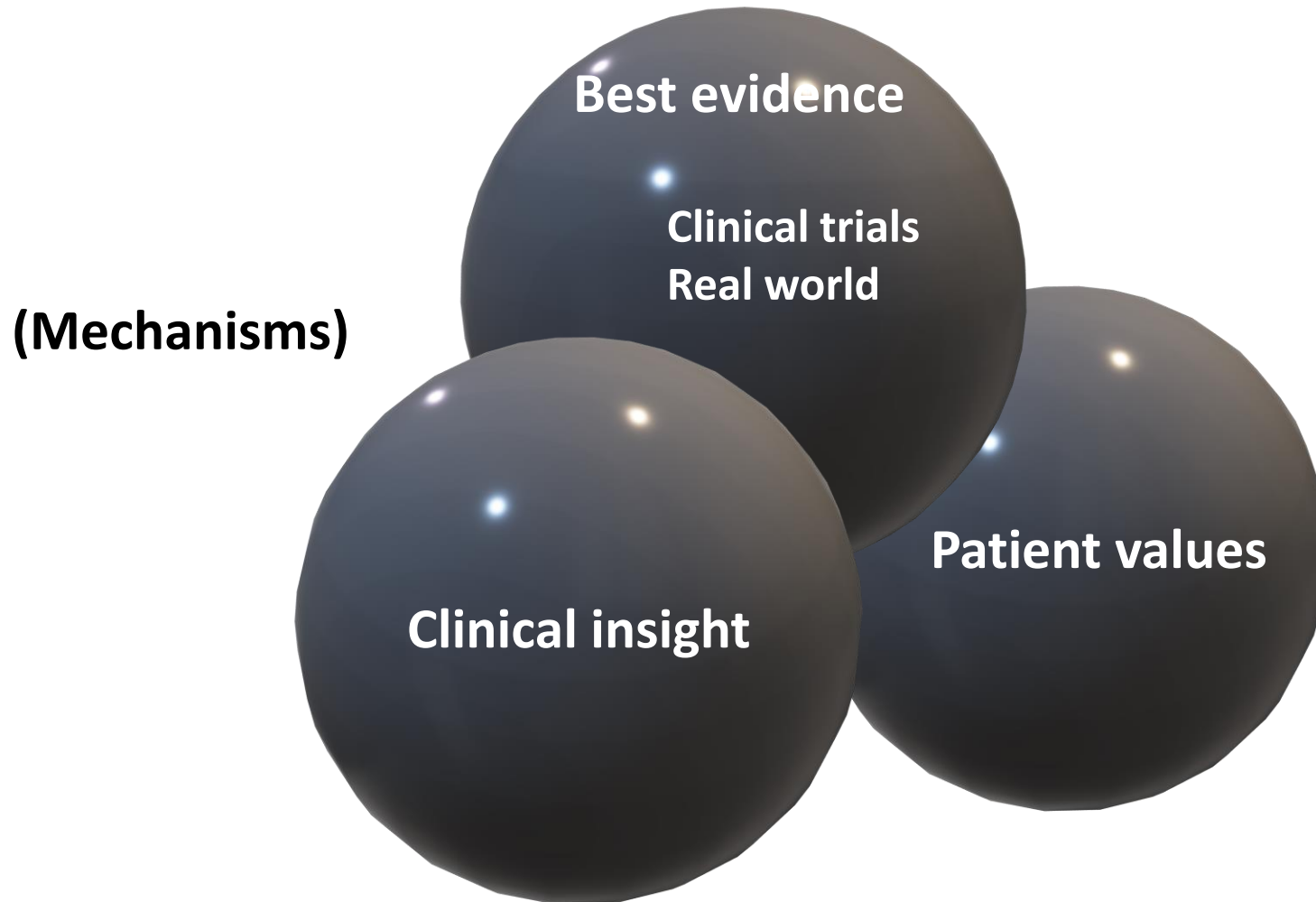


**CROHN'S &
COLITIS UK**



AWARE-IBD and POPSTER: Where do these studies sit?

3 Pillars of Evidence Based Medicine / Health Care



Healthcare professional survey about unplanned admissions in Inflammatory Bowel Disease

Are you a...
IBD Gastroenterologist
IBD Surgeon
IBD Nurse
GP with a specialist interest in IBD
Allied health professional

Could you spare 10 minutes to complete our survey?



Rates of unplanned admissions in IBD has doubled over the last decade

We are interested in hearing your views about different types of admissions in IBD, and if there are instances where IBD unplanned admissions can be avoided or prevented

Scan the QR code here to view the survey!

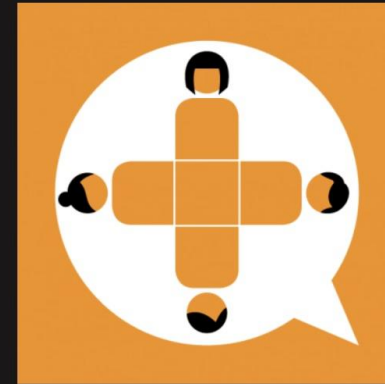


For more information about this research please contact Rachel Hawkins:
Rhawkins4@sheffield.ac.uk



Common Ambition

A programme for partnerships developing collaborative communities where people, families, health care professionals and researchers work together to improve health care.



4 projects funded from 356 applications

- A radical new approach for services for people with learning disabilities and autistic people in London
- Working with people of African and Caribbean heritage to reduce HIV transmission in Bristol
- Improving health services with homeless people in Brighton
- AWARE-IBD - Putting People with inflammatory bowel disease (IBD) in control of their care

For the public

Greater involvement of members of the public in the design and delivery of health care

For professionals

Professionals are better equipped to co-produce improvements to health care with the public

For decision-maker

Understanding of how the public can contribute to care improvement

For everyone

Improved access to and quality of care, especially for those who are poorly served