



BSG Annual Meeting SECC Glasgow 23-26 March 2009

Registration Now Live!

Early Booking Fees Before 10 Feb 2009

BSG Full Member:	£90/day
Honorary/Senior/Invited Guest:	Free
Trainee:	£55
Subsidised Fee (Medical Research Fellows and non-medically qualified Clinical Scientist):	£60 (whole meeting)
Associate Member:	£45/day
Non-member:	£110/day

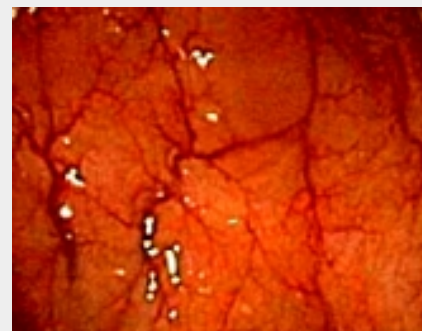
BSG Short-term Advanced Endoscopy Fellowships

Medical University of South Carolina, Charleston, USA.

Four grants each of £1,200 are available to selected gastroenterologists and trainees working in Great Britain. The successful applicants will spend 2 weeks studying advanced Endoscopy techniques and applications with Dr Peter Cotton at the Digestive Disease Center of the Medical University of South Carolina (MUSC) in Charleston, USA.

The program will feature observation of ERCP, EUS and other advanced techniques, case presentations, didactic lectures, teaching rounds and research conferences, but does not include "hands on" training.

BSG Webcast



View the WebCasts taken at the BSG Annual Meeting 2008 at the following link: [Click Here](#)

[Click here to see all meetings](#)

The Mattu Oesophago-gastric Cancer Symposium

8-10 December 2008

'Minimally invasive approaches to oesophageal and gastric cancer'
Postgraduate Medical School,
Guildford, Surrey.

[Programme](#)

Hepatology 2009 Course

25th-27th January 2009
Royal Free & University College
Medical School
Hampstead, London, UK

Details of the Digestive Disease Center can be found on www.ddc.musc.edu and a guide to Charleston at www.charleston.net

This program is supported by a grant from Boston Scientific and requires a 400 word report within 1 month of completion of the fellowship.

[Further Information](#)

2008 Report - by Dr Umakant Dave - [View Report](#)

Dame Sheila Sherlock Travelling Fellowships in Hepatology

These Fellowships have been offered by Dr Geraint James in memory of his wife, Dame Sheila Sherlock. Their purpose is to offer consultants and specialist registrars the opportunity to learn new techniques and acquire new experiences, ideas and stimulation by travel and exchange of ideas.

Applications are invited from consultants and specialist registrars for the next Dame Sheila Sherlock Hepatology Fellowships. Two Travelling Fellowships are available covering a period of one month each and will be offered to one consultant and one trainee. Each Fellowship will be for a maximum of £2,000, with the recipients being responsible for funding any additional costs. Initial applications should be submitted on the appropriate forms.

Closing date for applications is 2 January 2009.

Link: www.rcplondon.ac.uk/trustfunds

Sir Francis Avery Jones BSG Research Award 2009

Applications are invited by the Education Committee of the British Society of Gastroenterology who will recommend to Council the recipient of the 2009 Award. Applications should include:

1. A manuscript (2 A4 pages ONLY) describing the work conducted.
2. A bibliography of relevant personal publications.
3. An outline of the proposed content of the lecture, including title.
4. A written statement confirming that all or a substantial part of the work has been personally conducted in the UK or Eire.

Entrants must be 40 years or less on 31 December 2008 but need not be a member of the Society. The recipient will be required to deliver a 30 minute lecture at the annual meeting of the Society in Glasgow in March 2009. Applications should be composed electronically in Word or Rich Text format and emailed as an attachment to the [BSG Office](#) by **31st December 2008**

[Click here for further information](#)

The Royal Marsden Cholangiocarcinoma Conference

29th January 2009
Royal Society of Medicine
1 Wimpole Street, London

[Click here for further information](#)



**21 -25 November 2009
ExCeL London**

Please note following deadlines:

**Opening of Abstract Submission:
January 2009**

Deadline for Abstract Submission:
8 June 2009

Reviewing of abstracts:
15-26 June 2009

Abstract handling meeting, Vienna:
10-11 July 2009

Deadline for late breaking Abstract
Submission:
17 July 2009



Education Committee Survey

BSG Education: Your Opinions Wanted!

The BSG Education Committee has designed a questionnaire to gather members' views on the educational activities of the BSG, particularly the Annual Meeting. The Education Committee is keen to better provide services for members, which might include more regional meetings or online content. It might involve new strands at the Annual Meeting.

We really appreciate your taking the time to complete this survey. Once analysed, the results will appear on the BSG website.

Professor J Jankowski, December 2009

Link: http://www.bsg.org.uk/e_comm/edq_form.htm

A prize of £100 of M&S Vouchers will be awarded to the 100th responder to the survey.

New BSG Vacancies!

Three senior BSG positions will become vacant after March's Annual Meeting. We are keen to receive applications from ANY member who is interested in one of the positions. The deadline for all three positions is **January 8th, 2009**. Interviews will be held at the end of January.

- **Secretary**
- **Vice-Chair Clinical Services and Standards Committee**
- **Workforce Co-ordinator**

Job Descriptions

Those interested in the Secretary position should email [Tom Smith](#)
Please email [Chris Romaya](#) for Vice-Chair and Workforce Co-ordinator

A Survey of BSG members' From Quintus Public Affairs

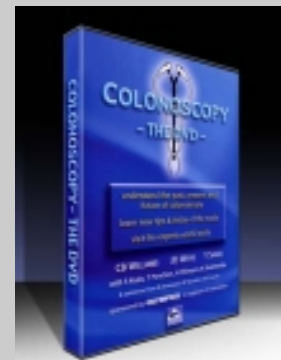
As you may have seen in our recent newsletter the BSG has appointed new communications advisers, Quintus Public Affairs to raise the profile of the BSG in political and media circles and to help us promote our key message. In their early months with the BSG, Quintus are keen to map the knowledge and expertise of our members to compile a directory of

Abstract submission for DDW 2009 is open now through 1st December 2008.

Registration for DDW 2009 opens **7th January 2009** for members of AASLD, AGA, ASGE and SSAT and **21st January** for nonmembers.

Website: www.ddw.org

St. Mark's Hospital - Educational CDs and DVDs



St. Mark's Hospital is a leading provider of medical training materials in gastro-intestinal care, catering for students, doctors, nurses, research scientists, surgeons and patients to a professional standard.

A variety of educational CDs and DVDs and interactive DVD-ROMs have been produced by an international line-up of top endoscopic professionals and surgeons.

The library contains everything from practical colonoscopy, nutrition, nurse training in endoscopy, fistula in ano, laparoscopic surgery and advanced polypectomy to new techniques and methods such as Narrow Band Imaging and ESD (endoscopic submucosal dissection).

You can find out more about the St.

members' interests to draw upon in order to respond to Department of Health consultations, engagement with national and regional politicians and liaise with local and national press.

To help them in this task, please read the following questions and after you have finished reading this e-newsletter forward this email with your answers to Robin Grainger at Quintus - robin@quintuspa.com :

What are your areas of expertise (clinical/health policy – the area can be as broad or as narrow as you like)?

Would you be willing to act as a BSG spokesperson on any of these issues – in responding to consultations or talking to regional/national media or to politicians?

Do you have previous experience of dealing/speaking with local or national media? If so, who?

Do you have previous experience of dealing with politicians (local councillors or MPs), and if so who?

Do you have good contacts/working relationships with service commissioners in your local area?

Do you have good contacts/working relationships with other key figures in your local Trust or SHA?

Coeliac City

Coeliac City (www.coeliacity.co.uk) is a patient support website where people with coeliac disease can meet, discuss and exchange tips and advice.

Please find below a link to the latest newsletter providing a range of lifestyle information for Coeliac patients.

[View Newsletter](#)

Association of GI Physiologists Newsletter

The latest version of AGIP's newsletter, 'New Wave', is now available for download on the BSG website.

[Click Here](#)

Delivery of the 18 Week Initiative

Harnessing resources to support the delivery of the 18 Week initiative is

Mark's range of DVDs at this website: [Click Here](#)

something that we will have all been involved with in recent times.

Over the past two years we [Dr Robert Logan, Dr Adrian Manning, Dr Andrew Sumner and Basil Fozard] have been working with the Department of Health's 18 Weeks team to develop clinical commissioning pathways for the three high volume gastroenterology conditions of dyspepsia, rectal bleeding and a change of bowel habit. These were released earlier this year.

Last Winter we delivered a surge in performance: between December and March the percentage of patients requiring admission who began treatment within 18 weeks rose from 86% to 97%.

Currently we are ahead of the required standard in waiting times for admitted patients – with four months still to go – but adrift in the treatment of non-admitted patients.

In September, 98% of gastroenterology patients requiring hospital admission or endoscopy were treated within 18 weeks. For outpatients the figure was 92%. For all specialities the respective national data are 90% for admitted and 95% for non-admitted pathways.

If you would like more information or would like to see the Gastroenterology pathways and case studies, visit the 18 weeks website at www.18weeks.nhs.uk

ASNEMGE 6th Summer School

ASNEMGE/EAGE Postgraduate Training Course 18–21 June 2009.

Prague - Czech Republic

Please note that the deadline for applications is January 31st, 2009.

[Further Information](#)

EFCCA

Results from a recent survey by the European Federation of Crohn's and Ulcerative Colitis Associations (EFCCA) found that not only does IBD greatly affect patients' quality of life (QOL), nearly half of physicians and patients are not initiating conversations with each other about this and strategies for overcoming these problems.

To address this problem, a multidisciplinary Europe group - including an IBD consultant, nurse, patient and EFCCA representatives - have developed recommendations for an ideal IBD patient-physician consultation for engaging about the impact of IBD on patients' daily lives. Their recommendations, published in this month's Journal of Crohn's and

Colitis, include:–

- Questions about their perception of IBD impact on QOL, including questions about incontinence, sexual relationships and emotional well-being
- Questions about the impact and effect of treatment
- Direction to other sources of information that are appropriate for the patient's age and disease type

The article is entitled 'Talking about Life and IBD: A paradigm for improving patient-physician communication' and the abstract can be found here: <http://dx.doi.org/10.1016/j.crohns.2008.07.002>

<http://www.efcca.org/>

Personalised Online Patient Support Now Available

In response to the need for information about IBD that consultants can direct their patients to, European Federation of Crohn's and Ulcerative Colitis Associations (EFCCA) recently launched a new series of online patient information guides, called "Life and IBD".

The guides, available at www.lifeandibd.org, aim to educate patients about their disease so they can play a role in managing their IBD more effectively. Importantly, the guides can also be personalised by patients so the information they are given is appropriate to their life stage, disease type and severity.

European Federation of Crohn's and Ulcerative Colitis Associations (EFCCA)

In response to the need for information about IBD that consultants can direct their patients to, EFCCA recently launched a new series of online patient information guides, called "Life and IBD".

The guides, available at www.lifeandibd.org, aim to educate patients about their disease so they can play a role in managing their IBD more effectively. Importantly, the guides can also be personalised by patients so the information they are given is appropriate to their life stage, disease type and severity.

[Further Information About EFCCA](#)

WGO workshop: 'Trial Design'

A new WGO workshop called 'Trial Design' will be held 1-2 April 2009 at the Palace Hotel in Dubrovnik, Croatia

Topics include: Types of clinical trials / Literature review / Data analysis / Statistics for clinicians / Publication / Ethical considerations.

Please find further information pertaining to this course below, and we kindly ask that all candidate applications are submitted to us no later than **December 15, 2008**.

- [Letter to Applicants](#)
- [Programme](#)
- [Application Form](#)

National Library for Health: Infections Specialist Library

The Infections Specialist Library (ISL) aims to keep health professionals up to date by providing convenient and comprehensive access to high quality evidence on the investigation, prevention, treatment and control of infectious diseases.

We are based at the Health Protection Agency's Centre for Infections and have strong links with many partner organisations, professional groups and charities. We aim to provide the best available evidence to clinicians and commissioners in an easy-to-read, easy-to-find format.

The ISL is a FREE library and information service for the NHS. We are part of the family of Specialist Libraries brought together through the National Library for Health to give easy access to the best available evidence in over 30 specialties, covering hundreds of topics. The ISL covers all infectious diseases.

[View the latest ISL e-Newsletter](#)

New Regional Group: Midlands Gastroenterological Nurses Society.

The BSG is pleased to promote a new website for associate/nurse members working in the Midlands. It will provide up to date information about local events, membership information and contact details of the committee members.

Please contact Warren Chapman (Warren.Chapman@swbh.nhs.uk) for further information:

<http://www.mgns.org.uk/>

Oxford Handbook of Gastroenterology and Hepatology, First Edition - in Electronic Format

- A practical guide to common clinical problems, including investigations and differential diagnosis
- Covers emergencies in gastroenterology and hepatology with immediate priorities in management
- Provides a unique A-Z compendium of gastroenterology with colour coded links to related chapters
- Includes an index of commonly used drugs with important practice points and common complications

Busy clinicians need easily accessible information falling into two broad categories: diagnosis and management of patients with particular groups of symptoms; and comprehensive information on defined clinical problems. With this in mind, the Handbook of Gastroenterology and Hepatology has been structured in a unique way.

The first section covers approaches to clinical problems detailing 29 of the most common problems in GI medicine, including infectious disease and gastrointestinal problems in developing countries.

A key section of the handbook is a unique A-Z compendium of the specialty which includes information on 100s of topics in gastroenterology, from Abetalipoproteinaemia to Zieve's syndrome. Colour coded links enable readers to find information in related chapters quickly. Further sections include emergencies, and commonly used drugs used in gastroenterology and hepatology, with emphasis on practice tips and common complications.

The result of this new approach is a handbook which is practical and informative, while being a pleasure to use. It is an essential guide to the management of common conditions and will be invaluable to all those involved in the care of patients with gastrointestinal disease.

Readership: Trainees and specialists in gastroenterology and hepatology, junior doctors, senior medical students and clinical nurse specialists.

For more information please [click here](#)

CORE's Events Programme For 2008/2009

Core is the only charity in the UK funding research into the whole range of gut and liver diseases. We spend almost £1m on research every year and provide expert information leaflets for sufferers, their families and friends. We cannot do this without your support!



Make 2008 or 2009 a year to remember by taking on a fundraising challenge for CORE!

Whether you want to run, trek, swim or cycle you can do it all for us either at home or abroad and whether you want to take part in memory of a loved one or to challenge yourself, your efforts will make a tremendous difference to the lives of people suffering from digestive diseases and their families.

We are promoting several fundraising events for 2008 and 2009 and these are:

Adidas Women's 5k run in London's Hyde Park, Liverpool and Birmingham- Sunday 6th September 2009

The London 10k run- Sunday 12th July 2009

The Windsor half-marathon- Sunday 27th September 2009

Feeling more adventurous? Join us in an amazing overseas challenge!

Climb the world's highest active volcano in Ecuador

Cycle from the Andes to the Amazon

Trek the Atlas mountains in Morocco

Climb Mt Killimanjaro (Many more challenges are available to suit every fitness level and at many destinations around the globe)

Or take part in a sponsored skydive for FREE; dates available all year round!

Sign up for one or more of our fun events today! Or if you would like further info about any of these events or if you would like advice on how to organize your own fundraising event please call Chloe on 020 7034 4972 or e-mail chloe@corecharity.org.uk

WE NEED YOUR SUPPORT!

If you believe that you received this message in error and/or do not wish to receive further emails, please [click here](#).

British Society of Gastroenterology, 3 St Andrews Place, Regent's Park, London NW1 4LB